

Homework & Practice 13-3

Tell and Write Time to the Half Hour

Another Look! Clocks can tell us the time to the half hour.

A half hour is 30 minutes.



The hour hand is between 7 and 8.

The minute hand is on 6.

It is 7:30.



The hour hand is between

11 and 12.

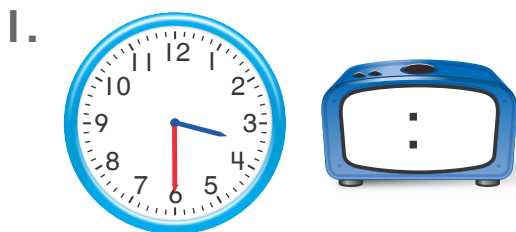
The minute hand is on 6.

It is 11:30.

HOME ACTIVITY Using an analog clock, have your child practice telling the time to the half hour. If possible, have him or her move the hands on the clock to tell the time you say. For example, say, "Show me 6:30." Have your child write the time on a sheet of paper after telling the time.



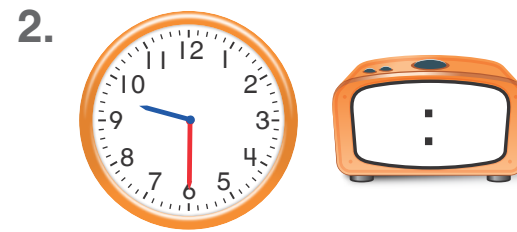
Complete the sentences. Then write the time on the other clock.



The hour hand is between _____ and _____.

The minute hand is on _____.

It is _____.

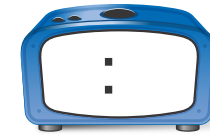


The hour hand is between _____ and _____.

The minute hand is on _____.

It is _____.

3. **Explain** It takes Vanessa a half hour to walk to the library. She leaves her house at 5:00. What time does she get to the library?



Write the time on the clock.
Then explain how you solved.

4. **Algebra** Kirk stirs his soup at 1:00. He started cooking the soup 30 minutes earlier. What time did Kirk start cooking his soup? Draw the hands on the clock face and write the time.



_____ : _____

5. **Higher Order Thinking** Write about something you do a half hour before bedtime. Write the time on the clock. Draw the hands on the clock face to show the time.



6. **Assessment** Which shows the same time as the clock face?

8:30

8:00

7:30

6:30

(A)

(B)

(C)

(D)

